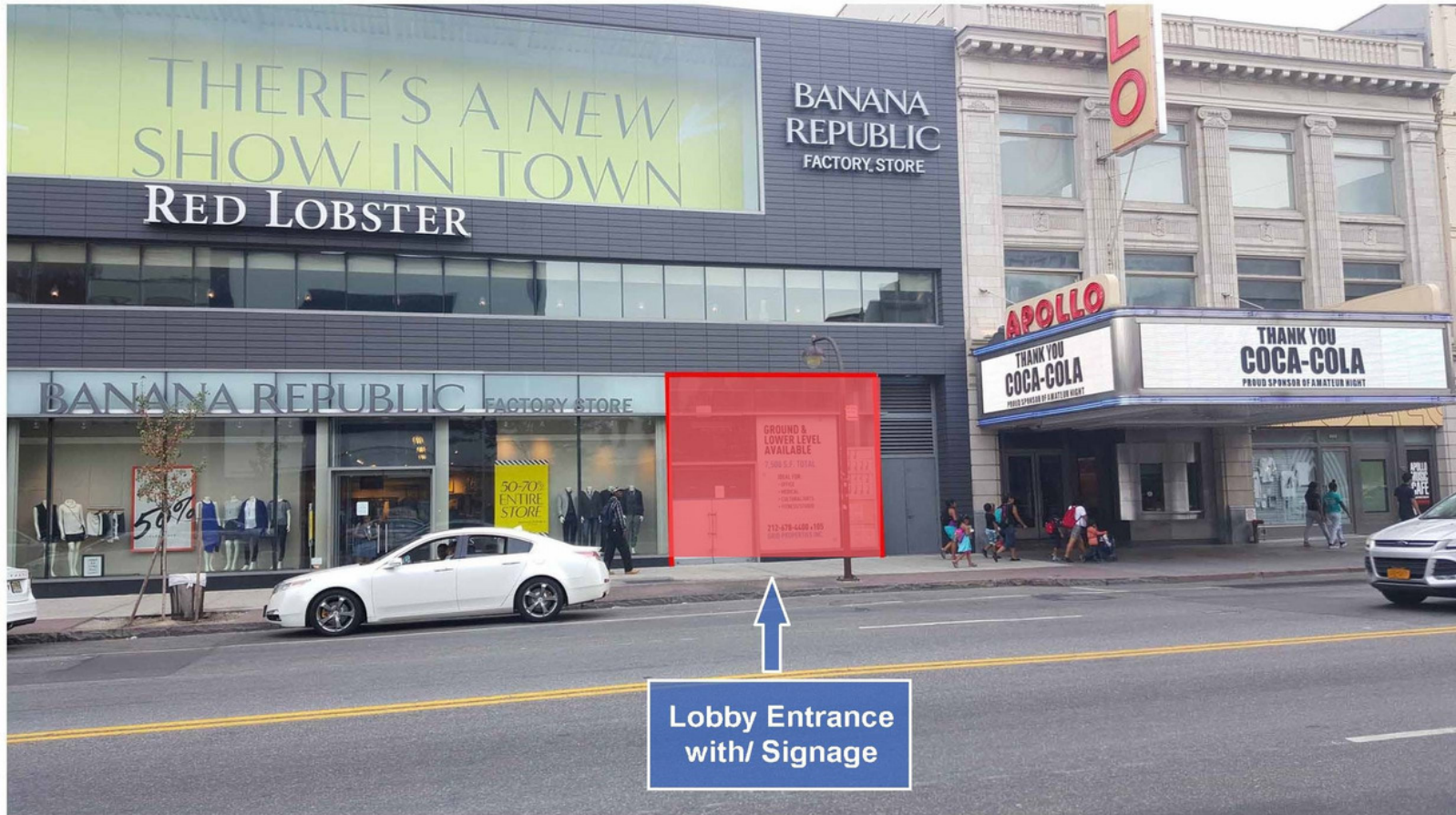


# 261 W 125 STREET

## Harlem, NY

Prime Commercial Space Available for Healthcare/ Fitness/ Education



<b>Size:</b>	Ground Level	765 Square Feet
	Lower Level	6,800 Square Feet
<b>Possession:</b>	Immediate	
<b>Private</b>	Highly Visible 125th street entrance with signage	
<b>Entrance:</b>	Dedicated lobby and exclusive passenger elevator to lower level	
<b>Asking Rent:</b>	Upon Request	
<b>Comments:</b>	15' height throughout the space New construction One block from A/B/C/D subway station: 8,427,453 people annually Next door to world famous Apollo Theater	

**FOR FURTHER INFORMATION, PLEASE CONTACT:**

**Scott Auster / Managing Director / Grid Properties Inc. / 212.678.4400, x105 / sauster@gridproperties.com**

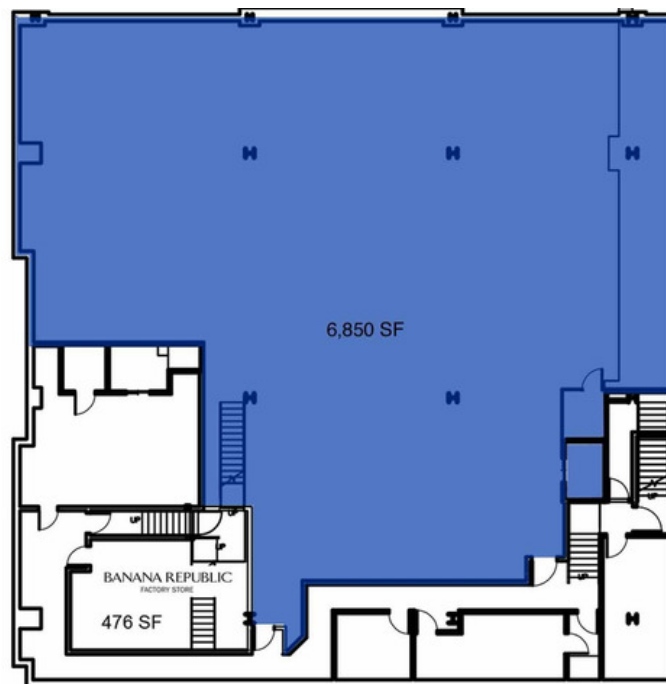
# 261 W 125 STREET

Harlem, NY

Prime Commercial Space Available for Healthcare/ Fitness/ Education



Ground Level



Lower Level